



HDR



Implementing the NYC Solid Waste Management Plan

New York SWANA

May 5, 2008

Some History

- Original SWMP – 1992
- SWMP Modification – 1996
- Fresh Kills Closure
- 2000 SWMP Modification
- 2002 Development of New 20-Year Plan



SWMP Goals

- Maximize Recycling – 25% Residential Diversion
- Long Term Export of Majority of DSNY Waste By Barge and/or Rail Transfer
- More Equitable Distribution of Transfer Stations
- Waste Containerization for Efficiency, Reliability and Flexibility
- Encourage Shift of Commercial Waste Export to Rail



SWMP Planning Cont'd

- Began in 2002
- Draft SWMP in 2004
- SWMP Environmental Review
 - DEIS in 2004
 - FEIS in 2005
- Final SWMP Approved - 2006



SWMP Planning

- Proposed Material Recycling Facility At South Brooklyn Marine Terminal
- Continued Staten Island Truck to Rail
- Proposed 4 Converted MTSs:
 - North Shore, Hamilton Avenue Southwest Brooklyn and East 91st Street
 - Designed to Minimize Potential Impacts

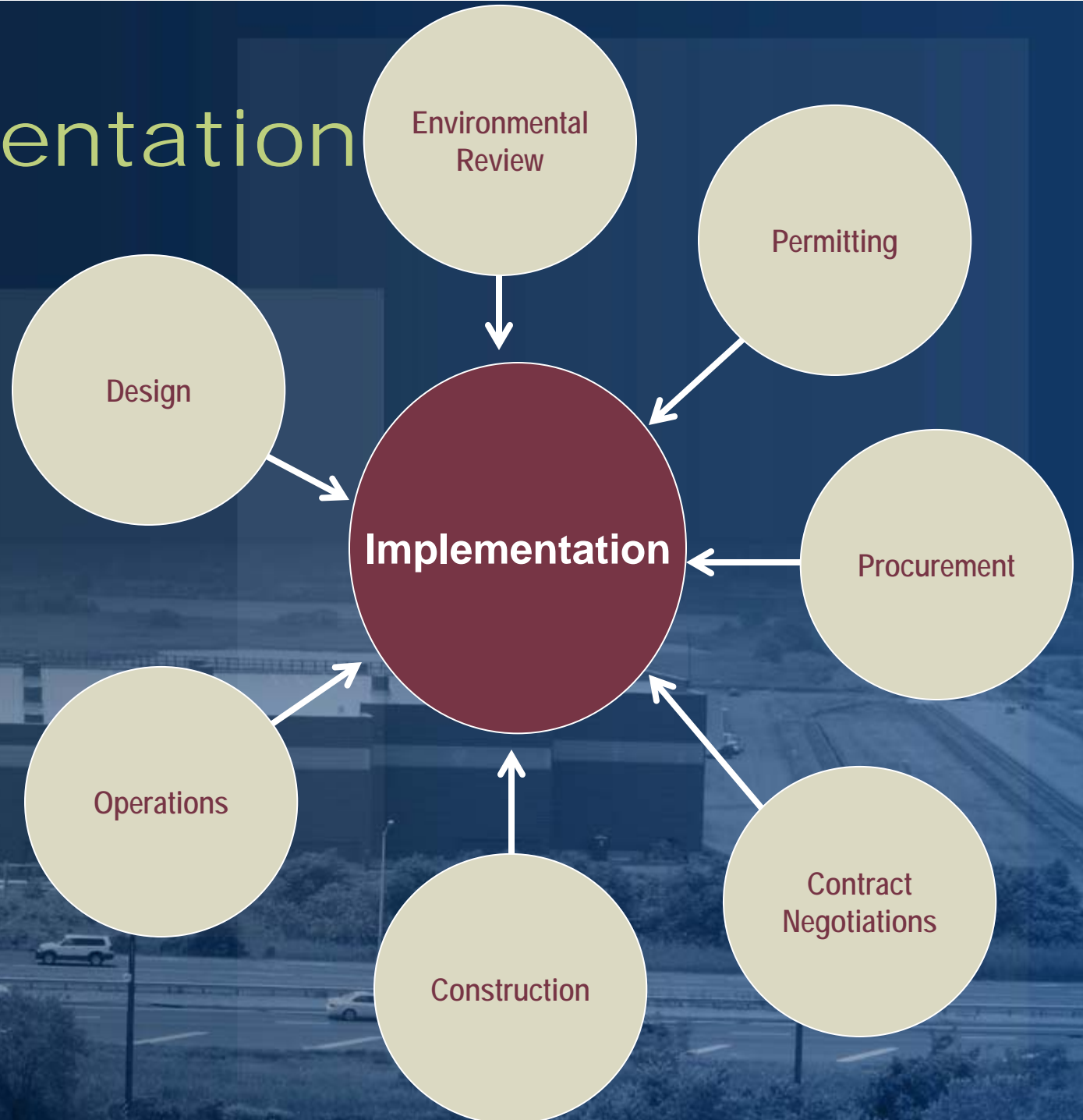
SWMP Planning Cont'd

- Proposed Shift to Truck-to-Rail Export from Private Transfer Stations Serving 3 Wastesheds
- Proposed Government-to-Government Agreement with Port Authority for Essex County RRF for 2 Manhattan Wastesheds

SWMP Planning Cont'd

- Potential to Export Commercial Waste from Converted MTSs
- Proposed 2 Transfer Stations in Manhattan
 - Existing W. 59th Street MTS for Commercial Waste Export
 - Recyclables Transfer at Gansevoort MTS
- Revise Operating Rules for Private Waste Transfer
- Revise Siting Rules

Implementation



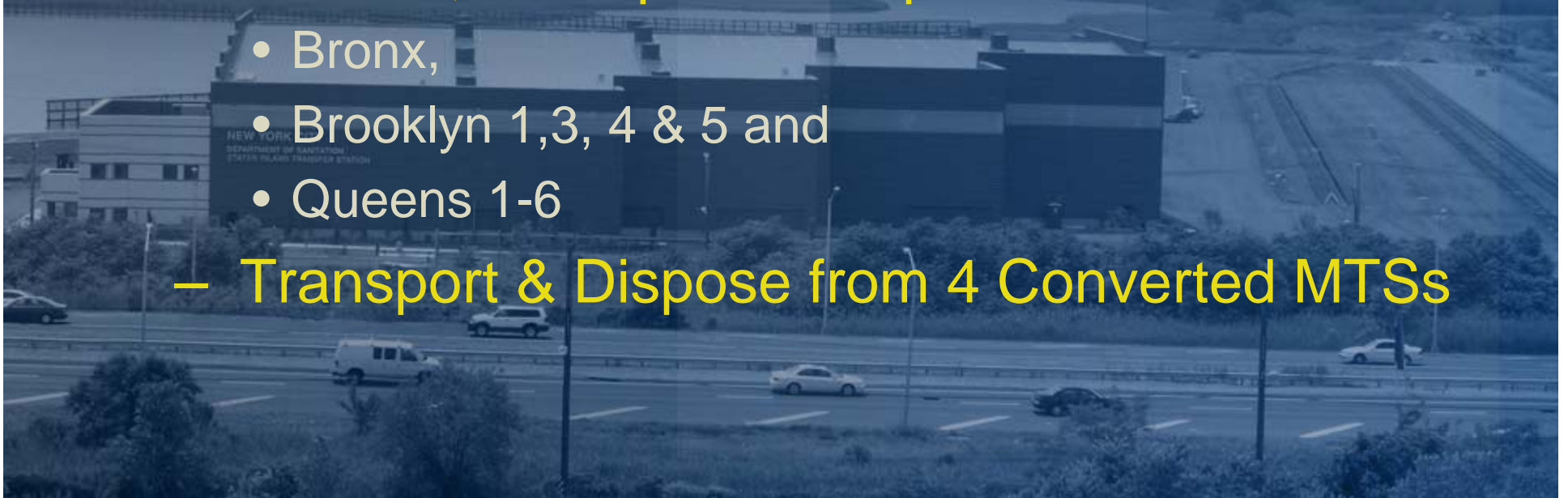
SWMP Implementation

- Recycling:
 - Contract with Sims Group to Develop Material Recovery Facility at SBMT
 - Legislation Filed to enable Development of Gansevoort MTS for Barge Transfer of Manhattan Recyclables to SBMT



SWMP Implementation

- Long Term Export Services - Procurement
 - Transport & Disposal Services for DSNY Staten Island Truck-to-Rail Transfer Station
 - Transfer, Transport & Dispose from:
 - Bronx,
 - Brooklyn 1,3, 4 & 5 and
 - Queens 1-6
 - Transport & Dispose from 4 Converted MTSs



SWMP Implementation

- Long Term Export Services – Negotiation and Award of 20-year Contact to:
 - Allied Waste Services - Rail Transport and Disposal From Staten Island Transfer Station
 - Waste Management - Transfer, Rail Transport and Disposal of Bronx Waste From Harlem River Yard
 - Waste Management - Transfer, Rail Transport and Disposal of Brooklyn 1, 3, 4 and 5 Waste From Varick Avenue

SWMP Implementation

- Long Term Export Services – Contract Negotiation
 - Waste Management - Transfer, Rail Transport and Disposal of Queens 1- 6 Waste from New Review Avenue Transfer Station



SWMP Implementation

- Long Term Export Services – Procurement
 - Proposals for 20 Years of Transport and Disposal Services from Converted MTSs
 - Proposer Responsibilities are;
 - MTS Crane Operation
 - Barge Transport of Containers
 - Intermodal Transfer,
 - Rail or Ocean Barge Transport to Disposal Site
 - 20 Years of Disposal

SWMP Implementation

- **Converted MTS Permitting:**
 - Obtained City ULURP Approvals of 4 Sites
 - Submitted Applications to NYSDEC for:
 - Part 360 Solid Waste Permit,
 - Article 15 and 25 Marine Resource Permits
 - State Facility Air Permit
 - Submitted Applications to USACE for Section 10/404 Permits

SWMP Implementation

- **Converted MTS Permit Status:**
 - NYSDEC Issued NOCAs for 4 MTS
 - NYSDEC Approved of North Shore Permits
 - USACE Issued Public Notice for North Shore
 - NYSDEC Approval of Hamilton Avenue Permits in Process
 - Issue Conferences Underway for East 91st Street and Southwest Brooklyn MTSs
 - Favorable ALJ Decision on E.91st Street

SWMP Implementation

- **Converted MTS Design and Construction**
 - Final Designs are Complete
 - On Receipt of Permits Issue Construction Bids
 - 3-Year Construction Period Anticipated



SWMP Implementation

- Commercial Waste:
 - Long Term Export Contracts Require Rail Transport of Any Commercial Waste from DSNY-Contracted Facilities
 - Converted MTS Permits Would Allow Export of Commercial at Waste Quantities Found in FEIS to Have No Impact
 - Operating Rules Require Odor Control Systems, Paved Surfaces and Tire Washing
 - Restrictive Siting Rules in Neighborhoods With Relative Concentrations of Facilities

SWMP Implementation

- Commercial Waste:
 - RFP Procurement of Company to Export Commercial Waste From W. 59th Street MTS
 - Company Selected for Negotiations
 - Environmental Review Process Will Commence



SWMP Implementation

- Focused on Long Term Infrastructure
- Achieves Environmental Benefits
- More Equitably Balanced

